

# **RAK473/476 Use Guidance**

## **Setting and Use of the Power Consumption Mode of the Module**

Shenzhen Rakwireless Technology Co., Ltd.

[www.rakwireless.com](http://www.rakwireless.com)

[info@rakwireless.com](mailto:info@rakwireless.com)

© RAK copyright. All rights reserved.

Companies and product names referred in the instruction belong to trademarks of their respective owners.

Any part of this document may not be reproduced, and may not be stored in any retrieval system, or delivered without RAK's written permission.

The document will be updated without prior notice.

## 1. Setting and Use of the Power Consumption Mode of the Module

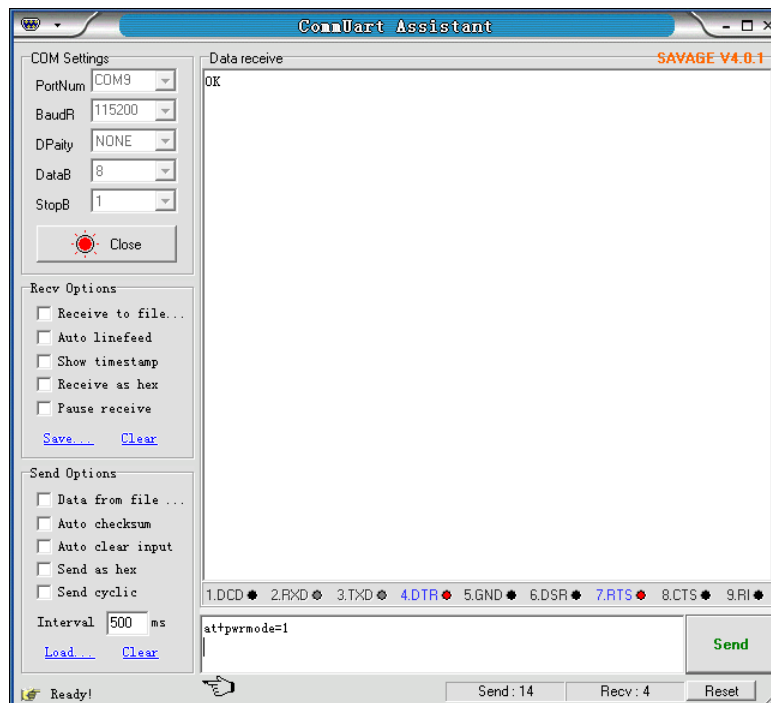
1. RAK473 and 476 have two power consumption modes, of which features are shown in the table below:

| Mode | Control part | Wireless part | Wake-up way | Average power consumption | Description  |
|------|--------------|---------------|-------------|---------------------------|--|
| 0    | Normal       | Normal        | No need     | 80mA                      | Total power consumption, working with the maximum performance  |
| 1    | Sleep_Mode   | Power_Save    | No need     | 30~50mA                   | The module does not support this function under AP mode. Under the light sleep mode, the wireless part remains to be connected, and it can communicate normally, but the speed of data transmitting and receiving decreases. |

2. Send the command of the power consumption mode, to access different power consumption modes

Send: `at+pwrmode=1\r\n` (1 is the light sleep mode, and 0 is the full power consumption mode).

Return: OK



## Version

| Version | Author        | Date       | Content modification       |
|---------|---------------|------------|----------------------------|
| V1.0    | Lianbo Wang   | 2016/02/15 | Create a document          |
| V1.1    | Xiaocheng Cao | 2016/11/06 | Modify some of the details |